

Using CORIOTools Suite for TVOne C2-400

A number of integrators are using the TVOne IT-C2-400 scaler with the QMOD-HD HDTV Modulator. Here's a few tips that will speed installation setup and installation.

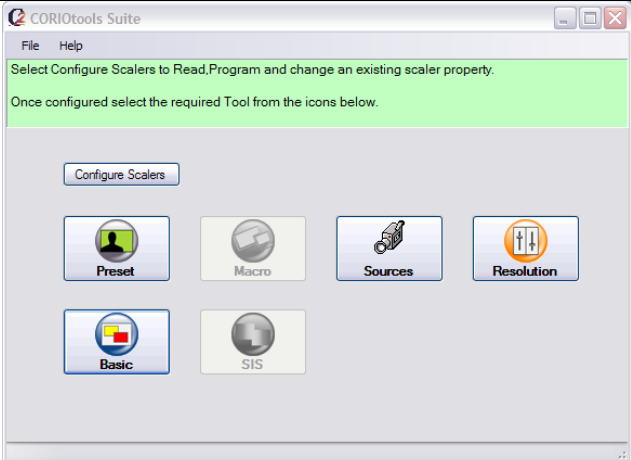
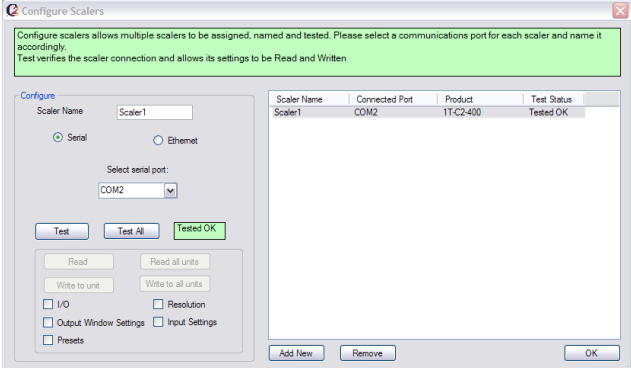
Pre-Install

- Download the [CORIOTools Suite](#) software (Windows). This guide is based on version 1.0.21.
- Obtain a DB9F to DB9M straight-through RS-232 cable
- Plan for a PC with an existing COM or USB COM port

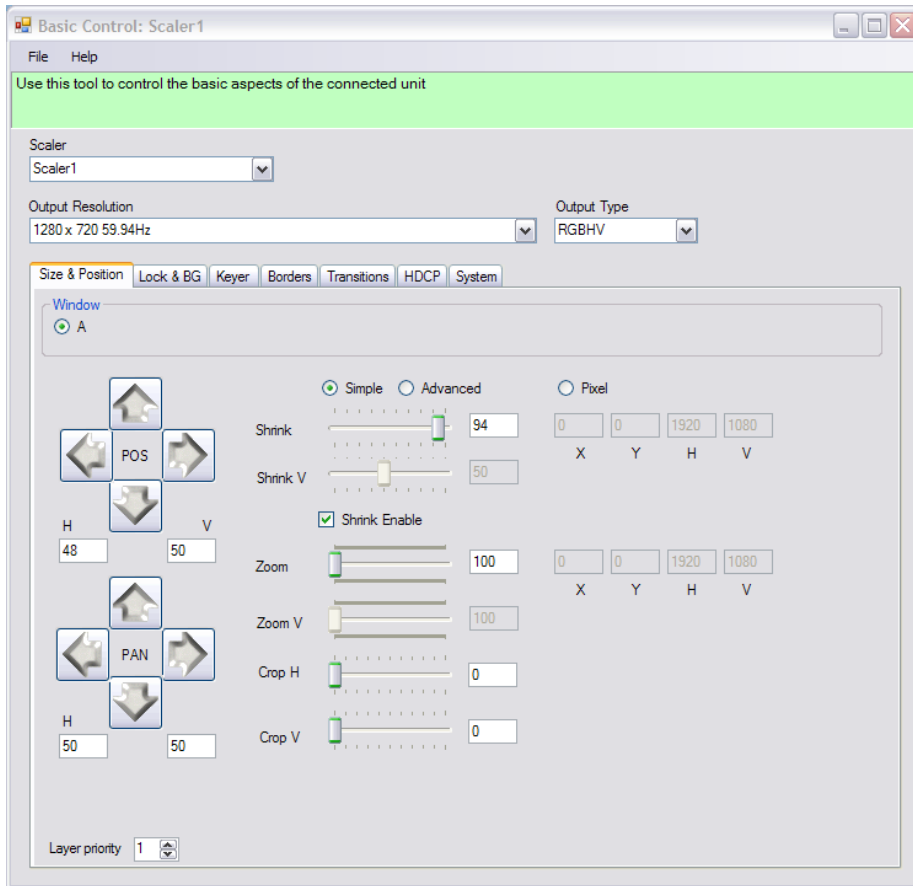
Startup

- Install CORIOTools
- Note which COM port you're using
- Connect the C2-400 to the RS-232 port, turn it on, connect to QMOD via VGA cable, select RGBHV on QMOD and planned resolution. Tune in output on a nearby LCD display. Add the PC source to the input of the C2-400.
- Open CORIOTools

Setup

	<p>Click Configure Scaler when the main screen appears.</p>
	<p>On the Configure Scaler page,</p> <ul style="list-style-type: none">• Select the COM port• Click Test. This may take a little while to sync up, sometimes it takes a couple tries to lock in• When the right-hand block says Tested OK, click OK at the bottom right
	<p>On the main screen, click the Basic button.</p>

Scaling



- Select 1280x720 59.94 or 1920 x 1080i 59.94
- Select RGBHV
- At this point, the video from the PC should be displayed on the nearby display
- Likely, the image will need to be scaled and positioned on the screen
- You can visually shrink and pan the image, or use the number values
- If you select Advanced, you can shrink H and V separately
- If you're planning to install other TV One/QMOD systems, you can save the settings to a file , and reload the settings to other TV One scalers.

Manual Operation

If you don't have a cable or PC available, the basic steps are:

Set Resolution

- Connect TV One to a widescreen display via VGA [you can't see the menu functions through the QMOD until you set the TV one to an HDTV resolution]
- Press **Menu**, then Down arrow to **Adjust Outputs**
- Press **Menu**, then press **Down** to **Output Res**, then press Menu to flash [xx] brackets
- Press **Up** or **Down** to select 1289 x 720, 59.94 [45]. You can also continue to 1920 x 1080, 59.94 [88]. Press **Menu** to enter value
- If the TV One was inadvertently set to Component (YUV), arrow back and use Menu to select Output Type, arrow to RGBHV, then press Menu to select. Or if you're using the TV One to scale a PC to the Component input of a QMOD-SDI, set to Component.

Adjust Video to Fit Display

Now you can connect the TV One to the QMOD RGBHV. Connect via an HD15 cable to the RGB input, then set the QMOD to RGBHV and tune a display into the QMOD RF channel. Choose a model typical to most of the facility displays. Different makes and models can overscan differently.

- If you were adjusting the Output, arrow back to Outputs Exit, then press Menu.
- Arrow forward to Sub Menu Windows and press Menu. In this mode, you can use the Up/Down arrows to change values, and see the image change on the screen. When you find a setting that works, you can press Menu to save the value. The menus are:
 - Zoom Level - most of the time, you'll need to shrink the image
 - H/V Zoom Pan – normally 50 50
 - Image Freeze -
 - H/V Crop – rarely used
 - H/V Out Shift (Key setting to shift image – Shrink first, then press, click or hold button to shift)
 - Shrink Level in percent (You often need to shrink image a bit to move image)
 - H/V Position – I tend to think of this one as making large changes in position
 - When you're done, down arrow forward to Exit, then press Menu
 - Store preset

