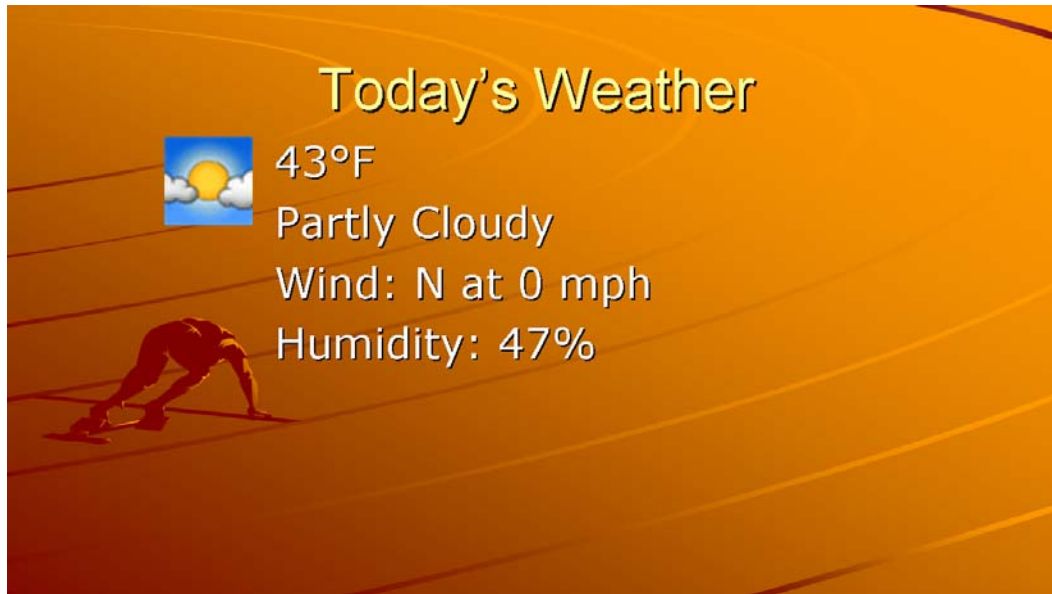


SignStream Tips

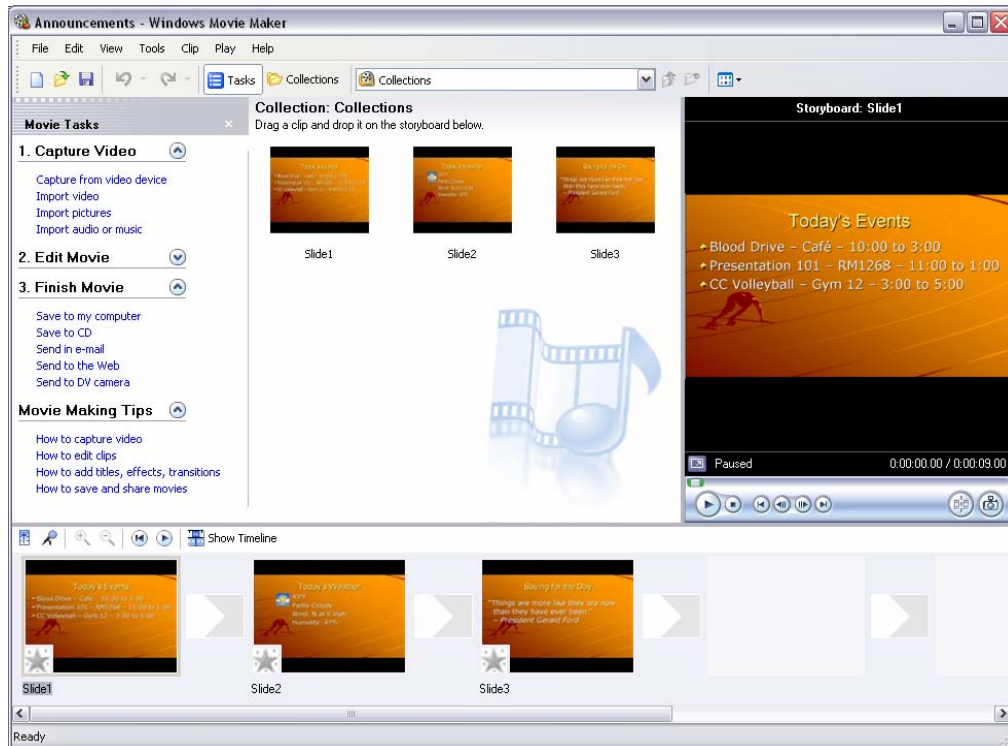
Creating ATSC-Format Videos from PowerPoint

PowerPoint



- Go to **File/Page Setup** and enter a Custom size of 14" W by 7.8" H, a 16:9 ratio
- Create your presentation
- Save your presentation
- **Save As**, clicking Save As Type, select JPG slides
- Select Every Slide when the prompt appears
- This will create a folder with individual JPG files

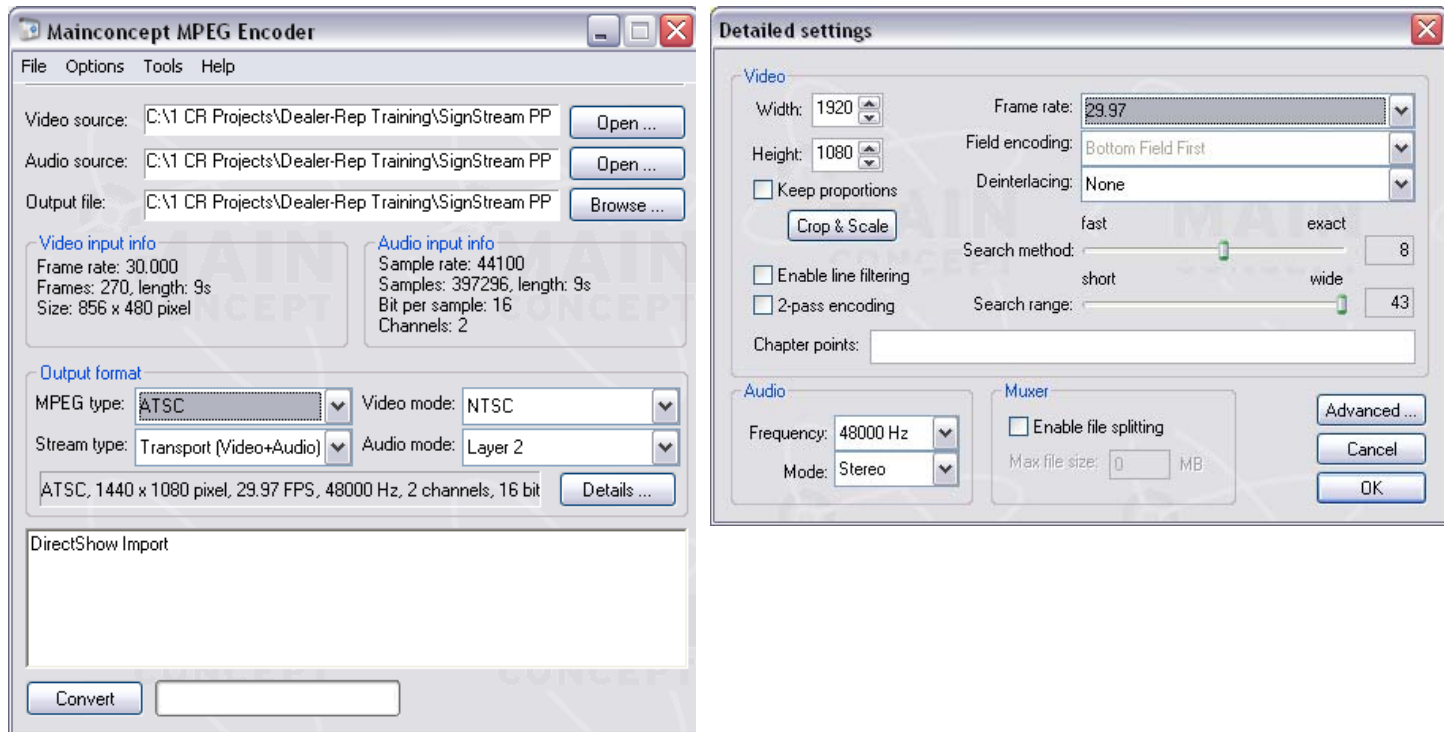
Windows Movie Maker



This application is included with Windows XP, SP2. Most PCs should have this onboard already. If it's not, it is likely something you can install from your original XP install CD. We have not found a way to download individually from Microsoft yet. There may be other applications with similar capabilities, but this free software offers a wide range of options in an easy to understand format.

- Open **Windows Media Maker** (often toward the end of your Start/All Programs listing)
- Go to Tools/Options and select:
 - Picture duration
 - Transition duration
 - NTSC video
 - 16:9 aspect ratio
- Select all the files in your PowerPoint folder and drag them to Movie Maker – this will copy them the Collection resource window
- Select all the images and drag them to the bottom
- Later on, spend some time to learn the different types of transitions and effects, but for most signage, the standard settings work just fine
- Save the project
- Click on Save to My Computer
- Create a name for the movie, and a folder. (The best approach is one folder for your PPTs, slides and movies, and another for saving the ATSC version of your movie.)
- Click Other Settings, select High Quality Video (large)
- Click Next to create the video
- Select Preview when complete to see the movie in Media Player
- This will result in a file that is 856 x 480 pixels

MainConcept MPEG Encoder



This application is available from www.mainconcept.com, Go to Consumer Products and select MPEG Encoder AVI and QuickTime to MPEG. Despite the name, this product works best with MPEG-2 and WMV files, and true video AVI files. QuickTime is often a mixed vector file that outputs poorly to ATSC. You can purchase the software for \$169 or download free to test. There is also a version for Macs, for a higher cost.

- Launch **MPEG Encoder**
- **Video Source:** Use Open to select video, you'll need to select All files – Movie Maker saves movie as a WMV.
- **Audio Source:** Skip or select same file if you have any audio
- **Output file:** Go to your SignStream file, or the Media folder of your SignStream server. Name file – MPEG Encoder automatically adds a .mpg extension.
- Click **Details**.
- Enter 1920 W. Usually the **Keep Proportions** box below is checked, and the Height will automatically be set to 1080
- If it is not exactly 1080, unclick **Keep Proportions**, then enter 1080 as the height
- Click OK
- Click **Convert** at bottom of screen
- Go to the file's folder and change your converted .mpg file to a .trp (transport stream)
- Copy the resulting .trp file to your SignStream directory and add to a playlist.

Also note that installing MPEG Encoder allows Windows Media Player to play .trp Transport Files.