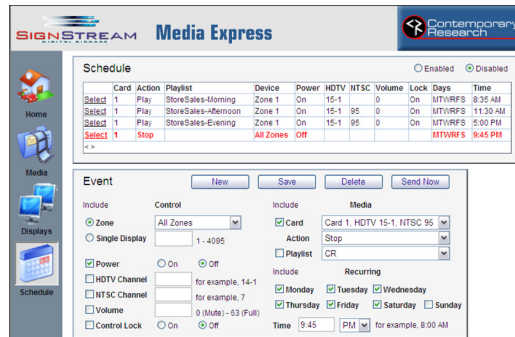




SignStream HDTV Digital Signage System

Applications
Retail Stores
Sports Venues
Worship Spaces
Entertainment Facilities



Sales Support

Planning a SignStream application? Our Sales Support staff will be happy to work with you, providing expert integration assistance and a complete systems proposal.

Tech Support

Need tech help? Give us a call. Our tech support staff are experts in the integration industry, so we can research solutions in the proposal stage, advise on programming requirements, and resolve installation issues.

Our job is to make our solutions work seamlessly with your system, performing as promised.

SignStream™ Media Players are network appliances that broadcast digital signage as HDTV channels through RF coax systems. Browser-based SignStream Media Express Web pages manage playlists, media libraries, and system setup. Event scheduling assigns playlists, start and stop media, and controls displays. Low-cost controllers integrate HDTV displays, responding to commands sent through the RF cable, and using the display's built-in digital tuner to present high-resolution content.

Media files are industry-standard ATSC MPEG-2 Transport Streams, and content can be originated from HD video production, Adobe AfterEffects, and even PowerPoint presentations.

Media Players include the **SSV-101** that includes one Modulator Card, the **SSV-304** for up to four cards, or the **SSV-306 RAID** player that hosts up to six cards.

System Components

SignStream Media Players

- Host ATSC MPEG2 Transport Stream HD video files
- Broadcast as HDTV and NTSC video channels, off-air or cable
- Select from 9 ATSC channels, 16 NTSC channels per card
- Support up to six HD playlists
- Include SignStream Media Express software for control, scheduling, and playlists
- Schedule events that include playlist assignment, media start and stop, and display control commands
- Support from 1 to 6 HDTV channels

RS232-to-RF Head End

- Communicates with Server via RS-232 or Ethernet
- Sends control commands through the same RF coax as HDTV signage

Display Controllers

- Controls IR, RS-232, and Smart displays with tuners
- Integrates monitors with HDTV tuner/controller
- Networks over existing RF coax
- Operates channel, power, input, and local control lockout

Displays

- Integrate displays with built-in HDTV and NTSC tuners
- Control with HD video for projectors and HD monitors

SignStream HDTV Digital Signage System



SSV-101 Media Player



SSV-304 Media Player



SSM-ATSC HDTV Card



RS232-to-RF Head End



RS-232 and IR Display Controllers



HDTV Display Controllers

All CR products feature a full two-year warranty.

Media Players

Feature	SSV-101 SignStream Player	SSV-304 SignStream Player
General	Broadcasts media files for signage (ATSC Transport Streams)	
Physical	19" W x 5.2" H (2RU) x 15.7" D, 26 lbs	19" W x 5.2" H (2RU) x 15.7" D, 26 lbs
Software	Windows XP Pro, SignStream Media Express playlist/scheduling software	
Drives	250 GB HDD, 1000 minutes of content	80 GB HDD, 250 GB SATA, CD/DVD R/W
Processing	Intel Celeron D 347, 512 MB DDR SRAM 4 USB 2.0 Ports, PS2 keyboard and mouse ports, VGA output. USB/RS-232 Interface	Pentium 4-531 3.0GHz 800MHz, 512MB 4 PCI Slots 10/100/1000 Mbps Ethernet port, RS-232
HDTV Cards	1 SSM-ATSC SignStream Cards	1-4 SSM-ATSC SignStream Cards
RF Specs	RF Out: 2 Female F connectors, +22 dBmV level Off-air ATSC channels 14-22 or Cable channels 66-73 Off-air NTSC channels (mono) 3-13, 95-99, Cable 3-22, 95-99 Formats: NTSC formats include auto, 4:3, cropped, letterbox, and full	
Includes	Includes one SSM-ATSC Card Rack mounting hardware	SSM-ATSC Cards not included Rack rail mounting hardware
RAID Player	SSV-306 RAID Media Player also available, supports up to 6 SSM-ATSC Cards	

Head Ends

Feature	ICC-HE RS-232 Head End	ICE-HE Ethernet Head End
Control	RS-232 data input	RJ-45 Ethernet, RS-232 data inputs
General	Communicates with SignStream control software Sends control commands through RF to iC-Net controllers Sends control data via RF, 74.7 MHz, narrow-band signal between channels 4 and 5 Receives status data at 5.6MHz, below sub-channels from 2-way iC-Net controllers	
Physical	19" W x 1.75" H (1RU) x 9" D, 3 lbs	
Includes	Rack mounting hardware 12 VDC Power Supply, 500 mA	

Display Controllers

Feature	ICC1-IR	ICC1-232	ICC2-ATSC
Type	IR Display Control	RS-232 Display Control	RS-232 Display Controller Onboard ATSC Tuner
Control	Discrete IR control Power, Channels, Inputs	RS-232 commands Power, Channels, Inputs, Control Lockout	RS-232 to Display Power, Channels, Inputs Control Lockout
Physical	5.5" W x 1.1" H x 3.4" D 8 oz	5.5" W x 1.1" H x 3.4" D 8 oz	8.5" S x 2.43" H x 8.0" D 2 lbs
Tuning	By Display	By Display	ATSC, NTSC, QAM
Outputs	HDMI, RGB/YpPr, NTSC Video HDMI, Coax, Optical, Stereo Audio All outputs Simultaneous		
Includes	IR Emitter Mounting hardware RF Loop Cable 12 VDC PS, 100 mA	RS-232 cable optional Mounting hardware RF Loop Cable 12 VDC PS, 100 mA	RS-232 Cable Optional 12 VDC PS, 1.5 A