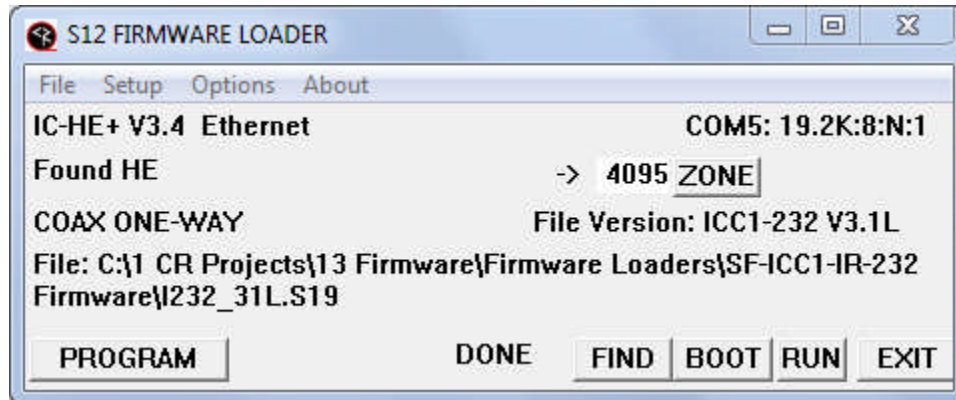


# S12 Firmware Loader

## RS-232 Tool for CR Control Firmware – Coax Mode



Many Contemporary Research products, including AV tuners, the IR-232 Interface, all iC-Net controllers and others feature our advanced S12 processor that allows in-the-field firmware updates using a Windows PC, COM or USB RS-232 port, and an RS-232 null modem cable (DB7 Female to Female, TX and RX swapped at one end).

### IC-NET Controllers – Update Firmware Over RF Coax

The firmware download process works simply and easily:

- Download the desired firmware self-extracting EXE file from the [crwww.com/Downloads](http://crwww.com/Downloads) page.
- Connect the ICC/ICE RS-232 port and note which RS-232 port you are using. At this point, firmware updates are only performed over RS-232, not IP.
- Make sure programs such as HotSync aren't already using the RS-232 port.
- Run the EXE program, then click **SETUP** to select the **COM** port.
- Normally, the desired firmware file is already loaded – you can use **File/Open** if you have several firmware files stored in your PC.
- Click **FIND** to connect an ICC/ICE-HE Head End, and the app will add options for device # and Zone
- You can select **ALL** or a **ZONE** by clicking the ZONE button and selecting a Zone, or enter an individual device in the adjacent field.
- When the program connects with the Head End, you'll see COAX ONE-WAY: and the firmware file you are loading after **File Version**, and where the file is found after **File:**.
- Click the **PROGRAM** button to start the loading process. During the coax update process, the installer will program the units in 3 cycles.
- When you update **ALL** or a **ZONE** of controllers, all will go into **BOOT** mode. However, only controllers specific to the update, such ICC1-232 controllers and ICC1-232 firmware, will accept and update the firmware. Those units will also reset themselves, but the other controllers will not.
- Press the **RUN** button, and all controllers will be reset correctly.